



PROJECT DATA SHEET:
American Urological Association Headquarters

PRESERVING A BUILDING 'BEYOND REPAIR'



*Masonry Preservation
and Enhancement Specialists*

10815 Beaver Dam Rd, Suite D
Cockeysville, MD 21030 USA
Tel: 877-815-7906 Fax: 410-771-1942



American Urological Association HQ

Location: Baltimore, MD

Age: Built 1906

Key Topics: Façade repair, historic stabilization, moisture infiltration NDE, CIF injection

Project Background:

- The American Urological Association (AUA), founded in 1902, is the premier professional association for the advancement of urologic care with over 19000 members
- Based in Baltimore since 1952
- The AUA purchased this historic early 20th century property as part of a \$2 million expansion program

Challenges Presented:

- During the renovation, the project team realized that the front façade was severely separated from the shear walls
- The situation was attributed to over a century of freeze thaw ratcheting, modifications, and moisture infiltration
- In certain areas the masonry façade was more than 11 inches out-of-plumb!
- The demising and adjacent walls were in poor condition as well, with their masonry units lacking any significant bond to each other due to mortar deterioration
- The project team was heavily considering demolition due to the building's rapidly worsening structural condition and associated safety concerns

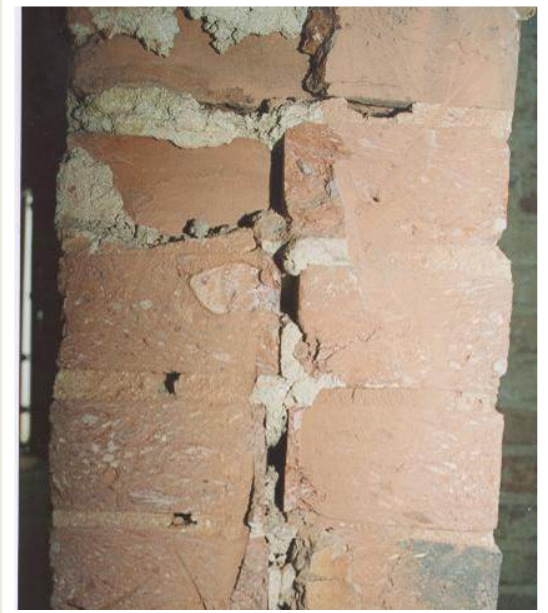




Repair and enhance without changing the aesthetics.

Services and Solutions:

- MSI began by performing a detailed non-destructive evaluation and analysis of the masonry façade, utilizing fiber-optic borescoping and in-situ testing
- MSI laboratory engineers used NDE and in-situ testing results to inform the development of a custom CIF material that matched the properties of the host
- Masonry Solutions cautiously injected the demising walls first, utilizing a low pressure injection, solidifying the loose units of brick
- Masonry Solutions then devised an innovative temporary shoring system, a series of huge "C-clamps" that grabbed onto the façade and, with steel framing, tied back to the demising walls using cables. Nothing had to be put up on or over the sidewalk, and the solution was much cheaper and less intrusive than typical shoring
- With the façade secure, a low pressure injection protocol was applied throughout the façade and its brick backup
- By injecting the voids within these areas, MSI eliminated the pathways for moisture permeation associated with the structural decline of the building
- MSI technicians also installed a series of stainless steel reinforcements to pin the masonry to its supports
- Once all work was completed, NDE verified that the walls were solidified and the large separation between the façade and its brick backup had been filled
- Masonry Solutions International could take pride in knowing they had saved a valuable piece of their hometown's historic fabric from being demolished



Masonry Preservation and Enhancement Specialists

10815 Beaver Dam Rd, Suite D
Cockeysville, MD 21030 USA
Tel: 877-815-7906 Fax: 410-771-1942

Masonry Solutions International has worked in the field of masonry preservation and enhancement for over 20 years. It has pioneered a number of advanced techniques, including compatible masonry injection and undercut fabric anchorage.